

# Pro<sup>TM</sup> C7100/C7100X Series

Value Added Colour Production Digital Presses



Pro<sup>TM</sup>  
C7100 models  
80  
ppm  
Colour  
B/W

Pro<sup>TM</sup>  
C7110 models  
90  
ppm  
Colour  
B/W

# Add value. Increase performance

Today's customers demand tight delivery times on short length runs. You need an affordable colour digital press that can more than meet their deadlines, can handle a wide variety of applications and extend your offering with 5<sup>th</sup> colour opportunities.

The Ricoh Pro™ C7100 and Pro™ C7100X Series are the ideal solutions. They complement offset in terms of image quality and offer high productivity.

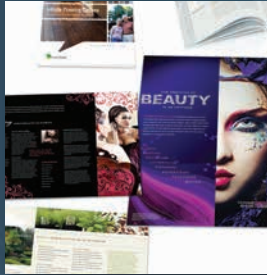
The Ricoh Pro™ C7100 Series is a series of 4 colour production presses, models include C7100/C7100S/C7110/C7110S. The Ricoh Pro™ C7100X Series is a series of 5 colour production presses, offering the possibility to print white or clear. Models include C7100X/C7100SX/C7110X/C7110SX.

So they add value as they raise performance and profits.

- Offset-like image quality
- 5<sup>th</sup> colour opportunities with white and clear gloss toner
- Maximises productivity
- Broad paper support
- Hassle-free operation
- Small footprint



## Reduces costs. Improves workflow



### High image quality

The latest VCSEL technology combined with new toner and advanced image control technology ensure offset like quality for professional results. So you can depend upon outstanding colour (and mono) output to cut time and costs on shorter run length jobs.



### Broad paper handling

With versatile paper handling capability this digital press can support paper weight up to 360gsm and banner sheet printing up to 700mm Simplex. Also the Advanced toner transfer enables printing on textured media.



### 5<sup>th</sup> Station function

This digital press offers the ability to print additional colours other than CMYK. Clear gloss and white toner provide more value added applications such as spot gloss, flood, and watermarks along with printing on coloured and clear media. Ideal for high-end work and greater impact on a wide range of jobs including annual reports, catalogues, postcards, direct mail, business and invitation cards, posters, packaging and window clings, etc.



### Ease of operation

An easy-to-access Super VGA operational panel with 10.4-inch colour LCD touch panel allows programme short cuts to be set for frequently used job operations. Includes Status Light Pole and Active Tray Indicator so operation can be monitored from a distance and 'on the fly' toner replacement to maximise uptime.

# Advanced technology for optimum output



## High performance

- The Ricoh Pro™ C7100 models run at up to 80 pages per minute and the Pro™ C7110 models at up to 90ppm in colour and B/W on thick stock (up to 300gsm)
- Paper handling and print quality is improved by advanced toner transfer technology, new elastic fusing belt and advanced image control technology - that ensures colour consistency
- Delivers high productivity in low volume runs helping you meet tight delivery schedules

## The latest VCSEL technology

Optimum image quality up to 4800 dpi is ensured by Ricoh's enhanced VCSEL technology. VCSEL has as many as 40 laser beams emitting simultaneously to give exceptionally accurate and smooth image quality.



## Uptime maximised

- New liquid cooling system enables extended and continuous printing
- Operators can replace Operator Replaceable Units (ORU) units for maximum uptime
- Status Light Pole – can see operational status even from a distance
- Operational panel features animations for user ease
- 'On the fly' toner replacement enables continuous usage



# Expand your opportunities for success



## Broad paper support

- Want to start an on-demand print business, bring printing in-house or offer your customers a wider proposition? The Ricoh Pro™ C7100 and Pro™ C7100X Series offers more print opportunities to grow your business and profitability
- Supports from 52 - 360gsm media
- Advanced toner transfer technology ensures superior transferability on textured media

## 5<sup>th</sup> Station value added applications

For the Pro™ C7100X Series, the introduction of the new 5<sup>th</sup> colour Station with clear gloss and white toner provides your business with more value added applications for standout on invitations, annual reports, catalogues, postcards, direct mail, business cards, posters, packaging and window clings.



## Target reliability

With the Ricoh Pro™ C7100 and Pro™ C7100X Series you benefit from exceptional reliability and productivity. It offers a lifetime of 14,400K A4 prints or five years and a recommended document volume range of 60 - 140K per month up to a maximum of 240K.

# The power for greater performance



## Robust functionality for maximum productivity

The Ricoh Pro™ C7100 Series and Pro™ C7100X Series are available with advanced external EFI Fiery servers. With a new user interface and extended functionality, they offer ease-of-use enhancements that help simplify file management and job workflow for greater efficiency.

## Increase RIP productivity

The EFI Fiery servers incorporate a high-performance 3.5GHz Intel Xeon processor, extended 2GB x 8 memory and a powerful 500 GB HDD. They enable you to handle complex jobs more easily. They also support the finishing options that you can offer to be more competitive and profitable.



# New options. New opportunities



## Vacuum Paper Feed

- Air vacuum to handle heavy media with coated surface
- Supports media weight (mainframe specific) 52gsm up to 360gsm
- Delivers air to front and sides of the media so each sheet can be delivered separately
- Offers a high level of feeding accuracy for greater productivity
- Up to three units can be combined

## Banner Sheet Tray

- Integrates with the upper tray of the Vacuum Paper Feed
- Paper size: 210 - 330mm x 420 - 700mm
- Media weight 52 up to 300gsm
- Up to 730 sheet capacity dependent on media thickness
- Banner Sheet exit tray included

## Multi-Bypass Tray

- Paper size: 100 - 330mm x 139 - 700mm
- Media weight 52 up to 216gsm
- Up to 500 sheet capacity dependent on media thickness



## LCT and Active Tray Indicator

- The Large Capacity Trays have easy-to-see Active Tray Indicators
- Paper trays indicate status of paper feed which prevents opening an active tray so avoids possible paper jam
- Allows user to know which trays are not in use so they can be refilled for the next job to speed up operation
- Supports up to 330 x 487mm paper size
- Offers enhanced Paper Feed Capacity
- Air-Assist Paper Feed enables ease of handling of various paper types such as coated paper and paper thickness 52gsm up to 360gsm



## More advantages and benefits



### Secured tray for valuable papers\*

- Paper Trays and optional Stacker unit can be secured with a lock
- Offers extra security for customers such as banks and security companies handling sensitive data
- Opportunity to provide this service to expand your offering

\*selected trays

### Standard Finisher and Booklet Finisher

- Stack capability: media up to 330 x 487mm
- Media weight: 52 - 360gsm
- Up to 2,500 sheets on Shift Tray (A4/LT, 80gsm)
- 100 sheets staple (B5-A3/215 x 279 - 279 x 431mm, 80gsm)
- Book Finisher offers the same stack capacity with 20 sheet booklet (B5-SRA3/215 x 279 - 330 x 487mm, 90gsm)
- Booklet Finisher has one-side edge trimmer as an option
- Enables creation of professional booklets



### Multi-Folding Unit

- Offers six options for paper folding
- Supports from 64gsm to 105gsm including coated paper
- For 2-Fold, 3-Fold In and 3-Fold Out, multi-page folding is available up to three pages from 64 - 89gsm
- Ideal for direct mail opportunities



# Increase output with ease



## Ring Binder

- Fully automates binding workflow, saving time and labour costs
- Ease of operation as the system processes from printing to closing rings without manual intervention
- Two sizes of consumable rings are available for 50 or 100 A4 sheets
- Cartridge ring holds up to 75 sets and easy to refill
- Black/white coloured rings available

## Plockmatic Booklet Maker

- 50 sheet or 35 sheet Production Booklet Making System (80gsm paper)
- Creates high quality 200 page (or 140 page) saddle-stitched and square folded booklets at rated engine speed
- Optional Bleed trim and creasing capabilities eliminate manual processing
- Supports up to 300gsm media - coated or uncoated - for a wide range of applications
- A newly designed precision face trimmer module allows you to trim the shingle effect off the booklet as required for a clean, professional look
- Off-line mode enables manual booklet making from documents produced on other devices



## GBC StreamPunch Ultra

- Wide media range - up to 300gsm
- Tab processing on the trailing edge of the sheet
- World's first 'Double Punch' capability supporting a wider variety of standard sizes including A3/DLT
- New Die Set design

# Saving time. Speeding up production



## Paper Decurl Unit

- The optional Paper Decurl Unit uses two paths to deal with concavity and convexity curls
- It puts an end to the common problem of curling paper in colour especially when printing with high toner coverage, on thin paper and paper with long grain

## Buffer Pass Unit

- Prevents toner adhesion/sticking by cooling down the printed paper before it's stacked inside the High Capacity Stacker or Finisher Shift tray
- Puts an end to ruined images or paper ripping when separated saving time and money



## High Capacity Stacker

- This new option stacks up to 5,000 sheets (SRA3, A4, LT size) on shift tray and 250 sheets on one proof tray
- Up to two stackers can be attached
- Includes roll-away cart as standard
- Ensures ease of high volume outputs

# The options for success



**1** Pro™ C7100/C7110

**2** Colour LCD Panel

**3** 5<sup>th</sup> Station Function

**4** High Capacity Stacker

**5** Booklet Finisher

**6** Paper Decurl Unit

**7** Buffer Pass Unit

**8** 2 Tray Cover Interposer

**9** Booklet Trimmer

**10** Vacuum Paper Feed

**11** Banner Sheet Tray

☐ Secured Tray for valuable papers (not illustrated)

☐ Standard Finisher (not illustrated)

☐ Multi-Folding Unit (option, not illustrated)

☐ Ring Binder (option, not illustrated)

☐ Plockmatic Booklet Maker (option, not illustrated)

☐ GBC StreamPunch Ultra (option, not illustrated)

☐ SRA3 LCT (option, not illustrated)

☐ Multi-Bypass Tray (option, not illustrated)

# Pro™ C7100/C7100X Series

## MAIN SPECIFICATIONS

### GENERAL

Technology:	4-drum & 5-drum dry electrostatic transfer
Fusing:	system with internal transfer belt
Toner Type:	Oil less belt-fusing method
Print Speed:	New chemical toner
	<b>Pro™ C7100 models:</b>
	FC (CMYK)/BK 80PPM
	Thick1(52g/m <sup>2</sup> ) – Thick7(300g/m <sup>2</sup> ) 80PPM
	Thick8(300g/m <sup>2</sup> ) – (360g/m <sup>2</sup> ) 65PPM
	Five colour printing and fifth colour only printing: print speed depends on media characteristics, media settings and the level of toner coverage.
	<b>Pro™ C7110 models:</b>
	FC (CMYK)/BK 90PPM
	Thick1(52g/m <sup>2</sup> ) – Thick7(300g/m <sup>2</sup> ) 90PPM
	Thick8(300g/m <sup>2</sup> ) – (360g/m <sup>2</sup> ) 75PPM
	Five colour printing and fifth colour only printing: print speed depends on media characteristics, media settings and the level of toner coverage.
Print:	Max 1200 x 4800dpi VCSEL
Warm-up time:	Less than 300 sec.
Dimensions (WxDxH)	Printer version 1,320 x 910 x 1,218mm Copier version 1,320 x 910 x 1,230mm
Weight:	(4 Station) Less than 560/580kg (5 Station) Less than 580/600kg
Power Source:	220-240V, 16A, x2 50/60Hz
Power Consumption:	Less than 5000W
Life:	14,400,000 or 5 years

### MEDIA HANDLING

Paper Input Capacity:	1st tray (std) 1,000 sheets x2 (Tandem) 2nd tray (std) 500 sheets (Optional) A3/DLT LCT 3rd tray 1,000 sheets 4th tray 2,000 sheets 5th tray 1,000 sheets (Optional) Vacuum Feed LCT 3rd-8th Tray 2,200 sheets each (Optional) Multi-Bypass Tray 500 sheets
Max Printable Area:	323mm x 480mm / 12.7" x 18.9", 323mm x 692mm / 12.7" x 27.2" (when using Banner Sheet Tray Option)
Paper Weight:	1st tray 52-300g/m <sup>2</sup> 2nd tray 52-256g/m <sup>2</sup> (Optional) A3/DLT LCT 3rd tray 52-256g/m <sup>2</sup> 4th tray 52-360g/m <sup>2</sup> 5th tray 52-256g/m <sup>2</sup> (Optional) Vacuum Feed LCT 3rd-8th tray 52-360gsm Banner 52-300g/m <sup>2</sup> (Optional) Multi-Bypass tray unit: 52-216g/

m<sup>2</sup>

### COLOUR CONTROLLER

<b>E-43A</b>	
Configuration:	Optional (external)
System Version:	Fiery System FS150Pro
CPU:	Intel i5-4570 (2.9GHz up to 3.6GHz with Turbo)
Memory:	2GB x 2
HDD:	1TB x1 SATA
CD-ROM Drive:	Supported DVD-RW
Operating System:	Windows 7 Professional for Embedded Systems x64
<b>E-83A</b>	
Configuration:	Optional (external)
System Version:	Fiery System FS150Pro
CPU:	Intel Xeon (Quad-Core) Xeon E5-2637 (3.5GHz)
Memory:	2GB x 8
HDD:	1TB x2 SATA / RAID 0 (for data) 500GB SATA (for OS)
CD-ROM Drive:	Supported DVD-RW
Operating System:	Windows 7 Professional for Embedded Systems x64

### OTHER OPTIONS

Optional: SRA3 13"X19.2" Large Capacity Tray (LCIT RT5090), Vacuum Paper Feed RT5100, Bridge Unit BU5010, Vacuum Feed Banner Sheet Tray Type S3, Multi-Bypass Tray Unit (BY5010), Multi-Bypass Banner Sheet Tray Type S3, 3,000 Sheets Finisher with 100 Sheets Stapler (SR5050), Booklet Finisher (SR5060), Cover Interposer Tray (CI5030), Ring Binder (RB5020), Perfect Binder (GB5010), Decurl Unit DU5040, Multi-Folding Unit (FD5020), Booklet Trimmer (TR5040), High Capacity Stacker SK5030, Buffer Pass Unit Type S3, RPIP Interface Box Type S3, PostScript3 Unit Type S3, GBC StreamPunch Ultra, Plockmatic Booklet Maker.

### WORKFLOW SOLUTIONS

EFI™ Digital StoreFront®, EFI™ Color Profiler Suite, EFI™ Fiery® Graphic Arts Package Premium Edition, EFI™ SeeQuence Compose, SeeQuence Impose, SeeQuence Suite, DirectSmile®, EFI™ Fiery® Central, Objectif Lune PlanetPress, Ricoh TotalFlow: PTI FusionPro®, MarcomCentral®, TotalFlow BatchBuilder, CGS ORIS Lynx & PressMatcher, Ricoh Process Director Express®, Prep, Print Manager, Production Manager & Path.

### ENVIRONMENTAL INFORMATION

Pro™ C7100/C7110 models comply with Energy Star 2.0 standards.

Please Note: Unless stated otherwise the data used in this brochure is based on A4 80gsm Standard Media.



**RICOH**  
imagine. change.

www.ricoh-europe.com

ISO9001 certified, ISO14001 certified.

All brand and/or product names are trademarks of their respective owners. Specifications and external appearance are subject to change without notice. The colour of the actual product may vary from the colour shown in the brochure. The images in this brochure are for illustration purposes only, slight differences in detail might appear.

Copyright © 2014 Ricoh Europe PLC. All rights reserved. This brochure, its contents and/or layout may not be modified and/or adapted, copied in part or in whole and/or incorporated into other works without the prior written permission of Ricoh Europe PLC.